

R1725 MOTOR

FOR USE WITH R1730 & R1735 REMOTE CONTROLS

programming instructions

R1725 MOTOR ASSEMBLY



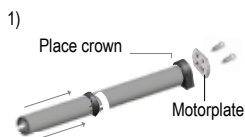
CONTROL RANGE

Transmitting distance may be affected due to environment.

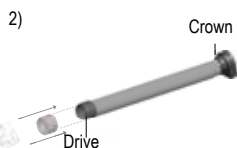


	L1 Open	L2 Partition	Emission frequency
100V-240V	200m	35m	433.92/868 MHz

DRIVE ADAPTER INSTALLATION



Slide the crown up the tube to the control end.



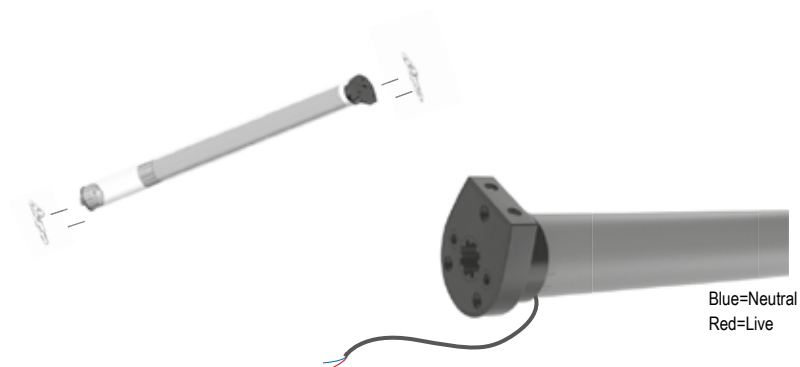
Screw the drive to the opposite end and fit Circlip.



Insert motor into the roller tube.

INSTALLATION

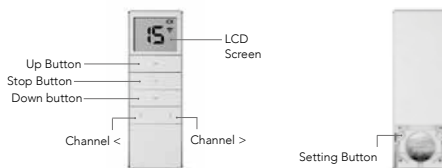
Manufacture the blind according to instructions and fit using brackets supplied.



R1730 REMOTE CONTROL

for use with R1725

Portable 15 Channel Remote Unit
1-15 (O operates all blinds)
2 jogs = 1 movement, up AND down



STEP 1 - PAIRING THE HANDSET WITH THE MOTOR

NOTE: During the setting procedure, the time between two operations must not exceed 10 seconds as this will cause the setting up process to quit.

2 jogs = 1 movement, up AND down.

- Switch on the power to the motor
- Remove the battery cover on the reverse of the remote. There are two setting buttons (P2) on either side of the battery, press either one
- Select a channel from 1- 15 on the remote by pressing Channel < or >
- Press the button on the motor and the motor will jog up and down
- Press P2 twice then the Up or Down button once. The motor will jog and beep

The motor and remote are now paired.

- Check direction
- To change direction press and hold the button on the motor for 4 jogs
- Move to a midway position

STEP 3 - SETTING A THIRD POSITION

- Move the blind using the Up and Down buttons on the remote to the desired position (press Stop)
- Press Stop followed by the P2 button then Stop twice more, this will cause the motor to jog twice
- To operate the third position, press and hold the Stop button and the blind will move to its third position
- To delete the third position, press P2, followed by the Stop button twice, the motor will jog twice

DELETING A LIMIT

- To delete a limit, press P2 followed by the Down button then press P2 again, the motor will jog twice

DELETING A HANDSET

- To delete a handset, press P2 then the Stop button followed by P2 again, the motor will jog twice

ADDING A HANDSET

- To add a handset, press P2 twice on the existing handset. Then press P2 once on the new handset, the motor will jog twice
- To perform a factory reset press and hold the button on the motor for 6 jogs

Technical specification

Input voltage: 3V (CR2450) X 1
Transmitting frequency: 433MHz
Transmitting power: 10 milliwatt
Operating temperature: -10°C to 50°C
Transmission distance: 200 metres open office, 35 metres on two walls

STEP 2 - SETTING THE LIMITS

Select the same channel and set the limits.

- You can select either position first
- Press P2, then the Up button followed by P2 again, the motor will jog and beep
- Press the Up button and the blind will start to rise
- Press P2 when the blind is close to the top and the blind will go into slow jog mode
- If you do not get the correct position press down and repeat by going up
- Press the Stop button on the remote and the blind will stop
- Hold the Stop button down until the motor jogs twice, this will set the top limit
- Press the Down button and the blind will start to go down
- Press P2 and the blind will go into slow jog mode
- Press the Stop button on the remote and the blind will stop

Press and hold the stop button down until the motor jogs, this will set the lower limit.

Setting is complete. For more blinds, select another channel on the remote and repeat from Step 2.

CAUTION

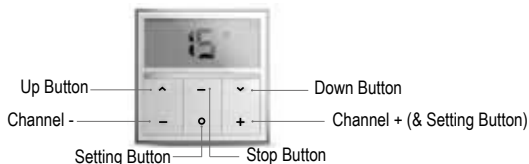
RISK OF EXPLOSION IF BATTERY IS REPLACED BY AN INCORRECT TYPE. DISPOSE OF USED BATTERIES ACCORDING TO THE INSTRUCTIONS.

Notice: Do not expose the unit to moisture or heat. When you use the control unit, if operation distance becomes short and less effective then please replace batteries. Please recycle old batteries.

R1735 REMOTE CONTROL

for use with R1725

Portable 15 Channel Remote Unit
1-15 (O operates all blinds)
2 jogs = 1 movement, up AND down



STEP 1 - PAIRING THE HANDSET WITH THE MOTOR

NOTE: During the setting procedure, the time between two operations must not exceed 10 seconds as this will cause the setting up process to quit.

- Switch on the power to the motor
- Always press O and + together
- Select a channel from 1 - 15 on the handset by pressing + or -
- Press the button on the motor and the motor will jog and beep
- On the remote, press O and + together twice then the up or down button once. The motor will jog twice each time and beep

The motor and remote are now paired.

- To change direction press and hold the button on the motor for 4 jogs

STEP 2 - SETTING THE LIMITS

Select the same channel and set the the limit.

- Press O and + together, then the up button followed by O and + together again, the motor will jog and beep
- Press the Up button and the blind will start to rise
- Press O and + together and the blind will go into slow jog mode
- Press the Stop button on the remote and the blind will stop
- Press and hold the Stop button down until the motor jogs and beeps, this will set the top limit
- Press the Down button and the blind will start to go down
- Press O and + together and the blind will go into slow jog mode
- Press the Stop button on the remote and the blind will stop
- Press and hold the Stop button down until the motor jogs twice and beeps, this will set the lower limit

Setting is complete. For more blinds, select another channel on the remote and repeat step 2.

STEP 3 - SETTING A THIRD POSITION

- Move the blind using the Up and Down buttons the remote to the desired position press Stop
- Then O and + together followed by the Stop button twice more, this will cause the motor to do 2 jogs and beep
- To operate the third position, press and hold the Stop button and the blind will move to its third position
- To delete the third position, press O and + together, followed by the Stop button twice, the motor will do 2 jogs

DELETING A LIMIT

- To delete a limit, press O and + together followed by the Down button then press O and + together again, the motor will do 2 jogs

DELETING A HANDSET

- To delete a handset, press O and + together then the stop button followed by O and + together again, the motor will jog twice and beep

ADDING A HANDSET

- To add a handset, press O and + together twice on the existing handset. Then press O and + together on the new handset, the motor will jog twice
- To perform a factory reset press and hold the button on the motor for 6 jogs

Technical specification

Input voltage: 3V (CR2430) x1
Transmitting frequency: 433MHz
Transmitting power: 10 milliwatt
Operating temperature: -10°C to 50°C
Transmission distance: 200 metres open office, 35 metres on two walls

CAUTION

RISK OF EXPLOSION IF BATTERY IS REPLACED BY AN INCORRECT TYPE. DISPOSE OF USED BATTERIES ACCORDING TO THE INSTRUCTIONS.

Notice: Do not expose the unit to moisture or heat. When you use the control unit, if operation distance becomes short and less effective then please replace batteries. Please recycle old batteries.

R1725 SAFETY INSTRUCTIONS

WARNING: Important safety instructions. Follow all instructions, since incorrect installation can lead to severe injury. Please save these Instructions.

Before installing the drive, remove any unnecessary cords and remove any equipment not needed for powered operation.

Install the actuating member of a manual release at a height less than 1.8m.

1. Instructions for use are provided with the appliance so that the appliance can be used safely.
2. Appliance must only be used to drive blinds.
3. Only use supplied driven parts for use with this motor appliance.
4. Keep the product number and data plate in a safe place.
5. This appliance is not intended for use by persons (including children) with reduced physical, sensory or mental capabilities, or lack of experience and knowledge, unless they have been given supervision or instruction concerning use of the appliance by a person responsible for their safety.
6. Children should be supervised to ensure that they do not play with the appliance.
7. Do not allow children to play with fixed controls. Keep remote controls away from children.
8. Frequently examine the installation for imbalance and signs of wear or damage to cables and springs. Do not use if repair or adjustment if necessary.
9. Do not store the motor with strong acid, alkaline, dirty or eroding materials.
10. Do not use the motor in a humid or damp environment.
11. Do not start the motor frequently or overload it as it might reduce the life of the motor.
12. Do not turn the regulating knob or the driving sleeve at non-operation state.
13. If you wish to open the blind under power-off circumstance, you may choose the E series products which carries manual functions, and invite qualified persons to install the handling crank and locks. Please note that the manual function doesn't work when motor is powered on.
14. Do not operate the blinds during maintenance (such as window cleaning) is being carried out in the vicinity etc.
15. The power supply cord should not be exposed to sunlight or rain directly during installation. H05VV of the motor power supply cord can only be used for indoor installations, H05RRR or H05RN rubber power cable can be used in outdoor installation; black ordinary tough rubber sheathed cord (60245 IEC 53) is suitable alternative cord for outdoor use, provided that sheath contains at least 2% of carbon in accordance with clause 11 of IEC60811 4 1 (EN 60335 2 97).
16. For installation of blinds, a horizontal distance of at least 0.4m is to be maintained between the fully unrolled driven part and any permanent object.
17. Fixed controls have to be visibly installed.
18. The rate operating time is 10 minutes. The appliance cannot be restarted until the temperature of motor has reached ambient.
19. If it is a remote controlled blind, during maintenance, please disable/close the remote control and power off.
20. When operating the manual release people must take care, since a blind may drop rapidly due to weak or broken springs.
21. If the supply cord is damaged, it must be replaced by the manufacturer, its service agent or similarly qualified persons in order to avoid a hazard.
22. The supply cord of the drive can only be replaced by the same type of cable supplied by the manufacturer of the drive (appliance).
23. If the power supply cord is too short do not use an extension cord, have a qualified electrician install an outlet near the drapery operator.
24. There must be a minimum tube diameter of 27.00mm for tubular drive.

CAUTION: In order to avoid a hazard due to inadvertent resetting of the thermal cutout, this appliance must not be supplied through an external switching device, such as a timer, or connected to a circuit that is regularly switched on and off by the utility.

Technical specification

110-240V, 50/60 Hz, 0.13 A, 13.9w